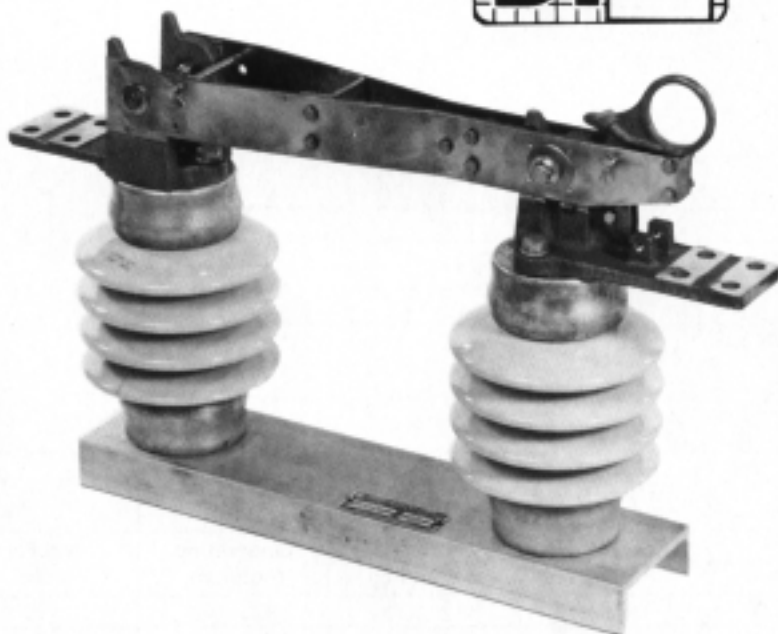


Hookstick Disconnect Switch BT2 • E101

Teco Air Switches
7.5 KV – 34 KV
600 – 1200 Amperes



Turner Type BT2
Switch originally
designed and built
by the A.B. Chance
Company.



The TURNER BT2 Switch is a hookstick operated switch used for changing connections in a circuit or for isolating purposes. Switches are available for vertical or underhung mounting in voltage ratings of 7.5, 15, 23 and 34 KV; 600 and 1200 amperes. Type BT2 Switches meet all applicable IEEE and NEMA Specifications.

1—Rigid Blade

Blades are made of 98% hard drawn copper, formed into a trussed "W" frame shape which resists side thrusts and assures proper blade-contact alignment when closing the switch. **1A** An adjustable stop is provided on the blade for 90°, 105° or 135° openings. Stops are factory set for 90° opening unless otherwise specified.

A positive latch holds the blade in a closed position during short circuits. A powerful lever action has been built into the pull ring mechanism so that the operator with a hookstick can break up any contamination or ice.

2—Jaw Contacts

The blade-jaw contacts are silver to copper with silver contact buttons pressed into each blade. Jaw contact pressure is held constant by spherical bronze

spring washers. The "split-tongue" design of the jaw contact centers the pressure directly over the contact area, providing excellent conductivity and prevents separation of the main contacts.

3—Hinge Contacts

The two blade members are attached to a wide hinge casting with contact pressure maintained with spherical bronze spring washers. The hinge contacts are silver to silver.

4—Terminals

The flat terminal pads have NEMA standard dimensions. Terminals can be supplied to fit any conductor requirements.

5—Insulators & Bases

NEMA Standard 3" B.C. station post insulators are furnished unless otherwise specified.

The standard base is fabricated from a structural aluminum channel alloy 6061-T6. The base can also, according to customer's preference, be fabricated from structural steel channel, hot dipped galvanized to ASTM specifications.

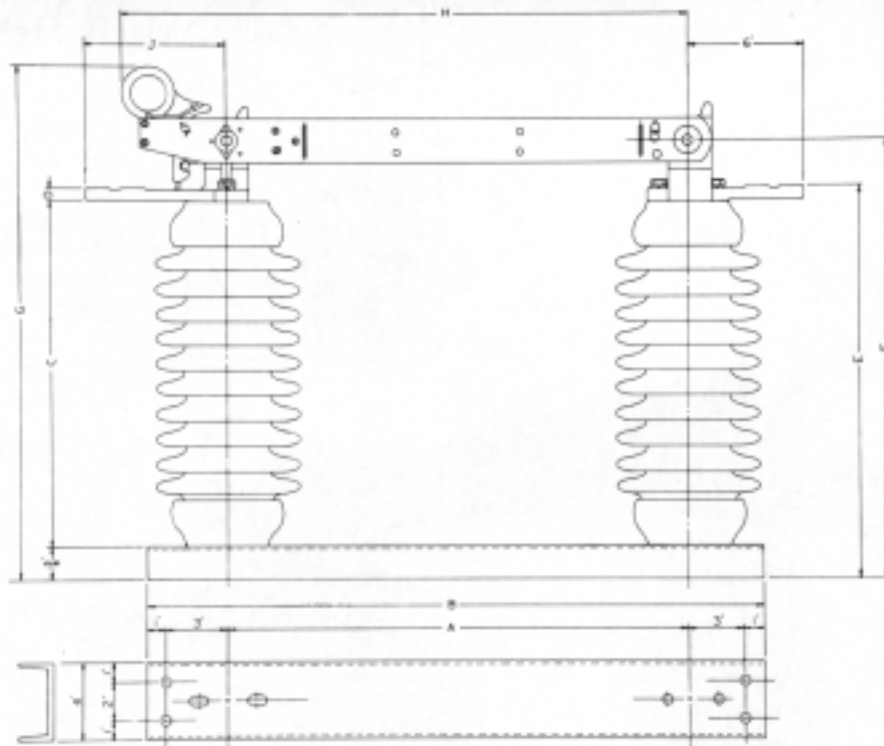


**TURNER ELECTRIC
CORPORATION**

9510 St. Clair Avenue
P.O. Box 3158
Fairview Heights, IL 62708
616/397-1865

© Turner Electric Corp. 1986

Ordering Data & Dimensions



ORDERING TABLE

Switch Rating		Station Post Insulators Technical Ref. No.	Drawing Number		Approximate Weight, Pounds		
VOLTAGE	AMPERES Cont. Momen.		Vertical Mounting	Underhung Mounting	Net Per Pole	3 Single Pole Units + Crate	
7.5 KV (95BIL)	400	20,000	TR 202	82000-2	82100-2	35	135
	600	40,000	TR 202	82001-2	82101-2	35	135
	1200	61,000	TR 202	82002-2	82102-2	60	210
15 KV (110BIL)	400	20,000	TR 205	82006-2	82106-2	48	174
	600	40,000	TR 205	82007-2	82107-2	48	174
	1200	61,000	TR 205	82008-2	82108-2	77	260
23 KV (150BIL)	400	20,000	TR 208	82012-2	82112-2	76	338
	600	40,000	TR 208	82013-2	82113-2	76	338
	1200	61,000	TR 208	82014-2	82114-2	108	434
34 KV (200BIL)	400	20,000	TR 210	SK831219	SK831221	90	380
	600	40,000	TR 210	SK831219	SK831221	90	380
	1200	61,000	TR210	SK831215	SK831217	132	506

DIMENSIONAL TABLE

RATING		DIMENSIONS IN INCHES								
KV	AMP	A	B	C	D	E	F	G	H	J
7.5	400	12	20	7½	½	9¾	11¾	15¾	17	8
7.5	600	12	20	7½	½	9¾	11¾	15¾	17	8
7.5	1200	12	20	7½	¾	9¾	12¾	16¾	17¾	7¼
15	400	15	23	10	½	12¾	14¾	17¾	20	8
15	600	15	23	10	½	12¾	14¾	17¾	20	8
15	1200	15	23	10	¾	12¾	14¾	18¾	20¾	7¼
23	400	18	26	14	½	16¾	18¾	21¾	23	8
23	600	18	26	14	½	16¾	18¾	21¾	23	8
23	1200	18	26	14	¾	16¾	18¾	22¾	23¾	7¼
34	400	24	32	18	½	20¾	22¾	24¾	29	8
34	600	24	32	18	½	20¾	22¾	24¾	29	8
34	1200	24	32	18	¾	20¾	22¾	25¾	29¾	7¼